

# Beef, Chicken and Pork

Kevin Grier, November 2024

**UFCAW**  
**local 401**





- **State of the Industry**
- **Prospects**





- **State of the Industry**
- **Prospects**



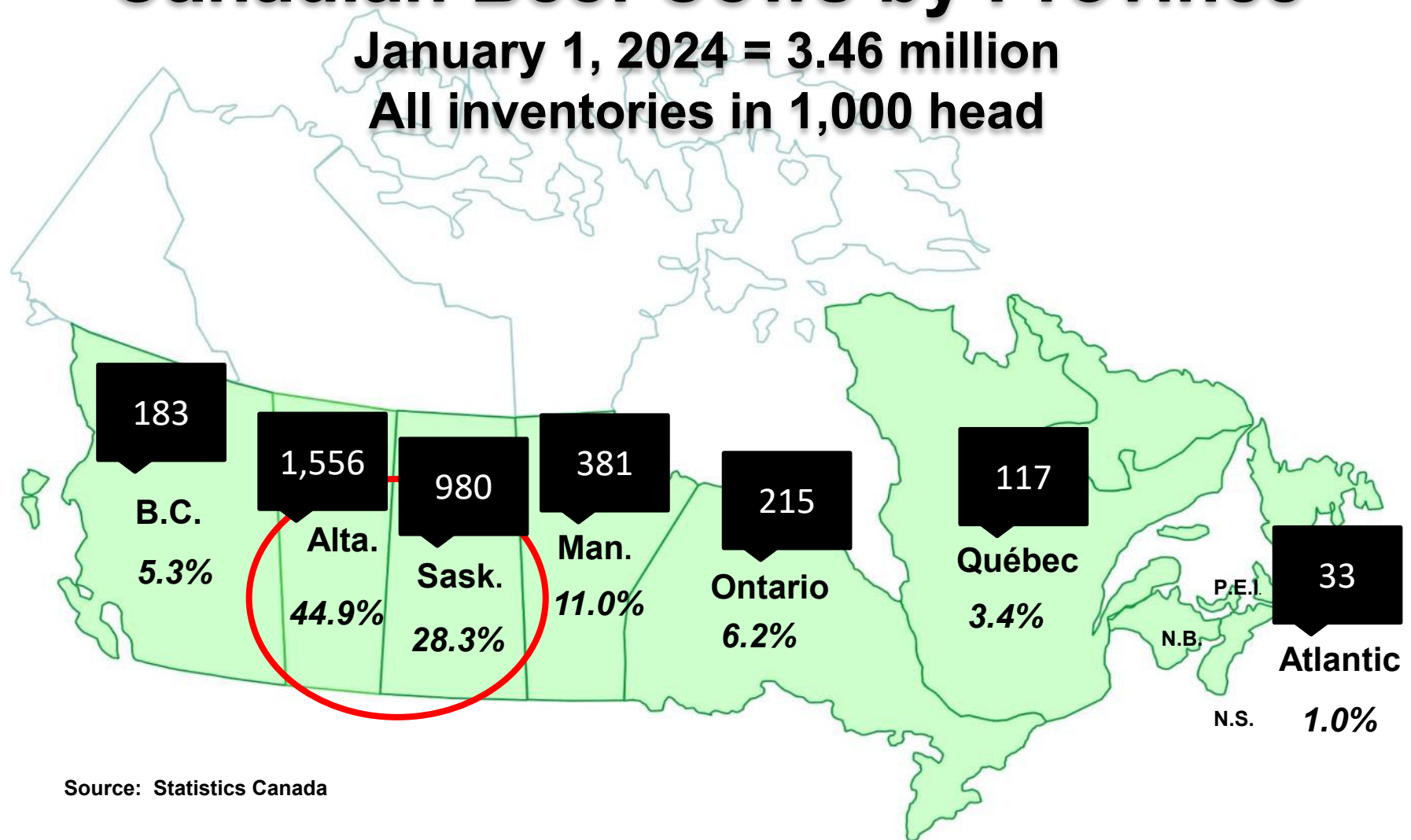


Who and  
Where

# Canadian Beef Cows by Province

January 1, 2024 = 3.46 million

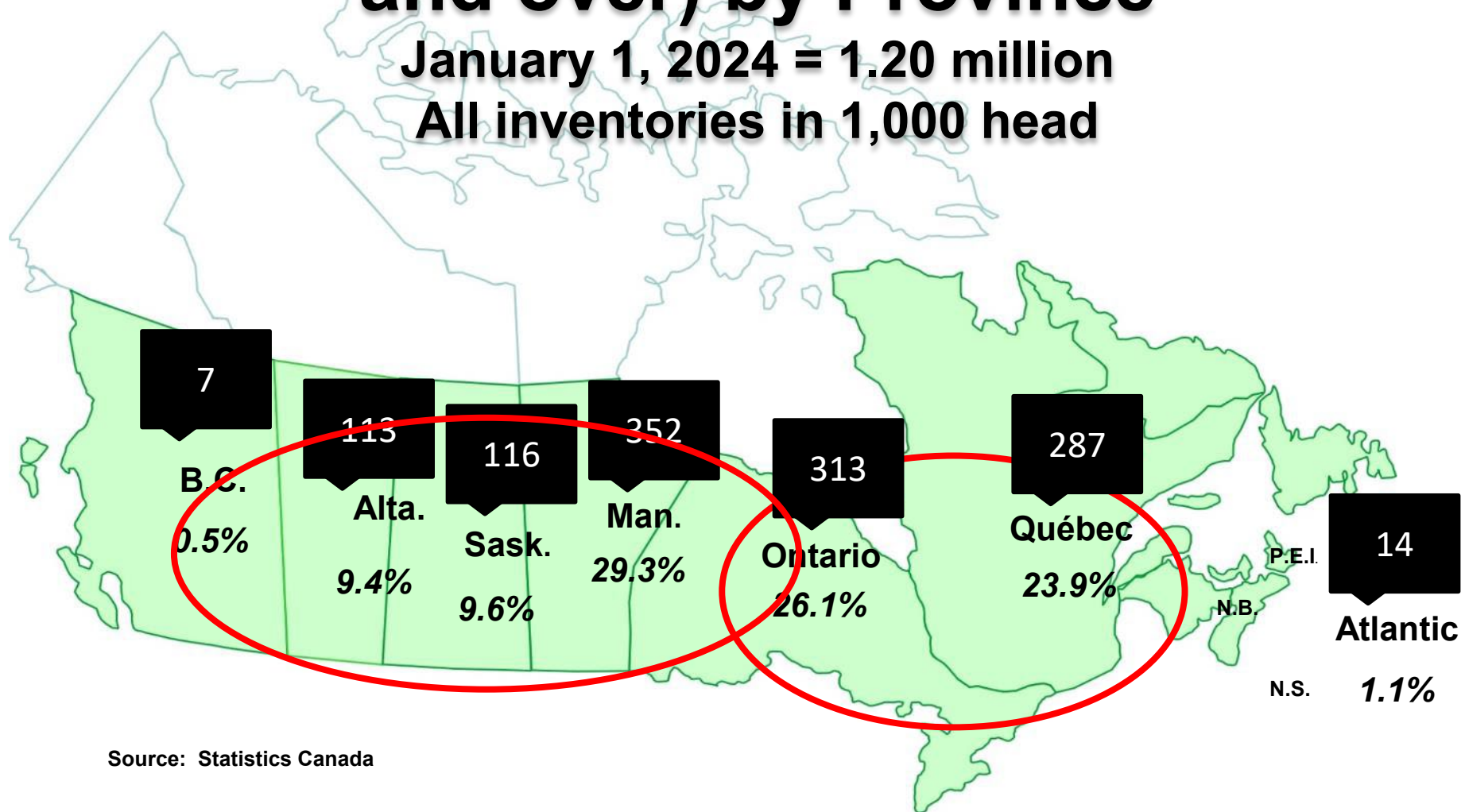
All inventories in 1,000 head



Source: Statistics Canada

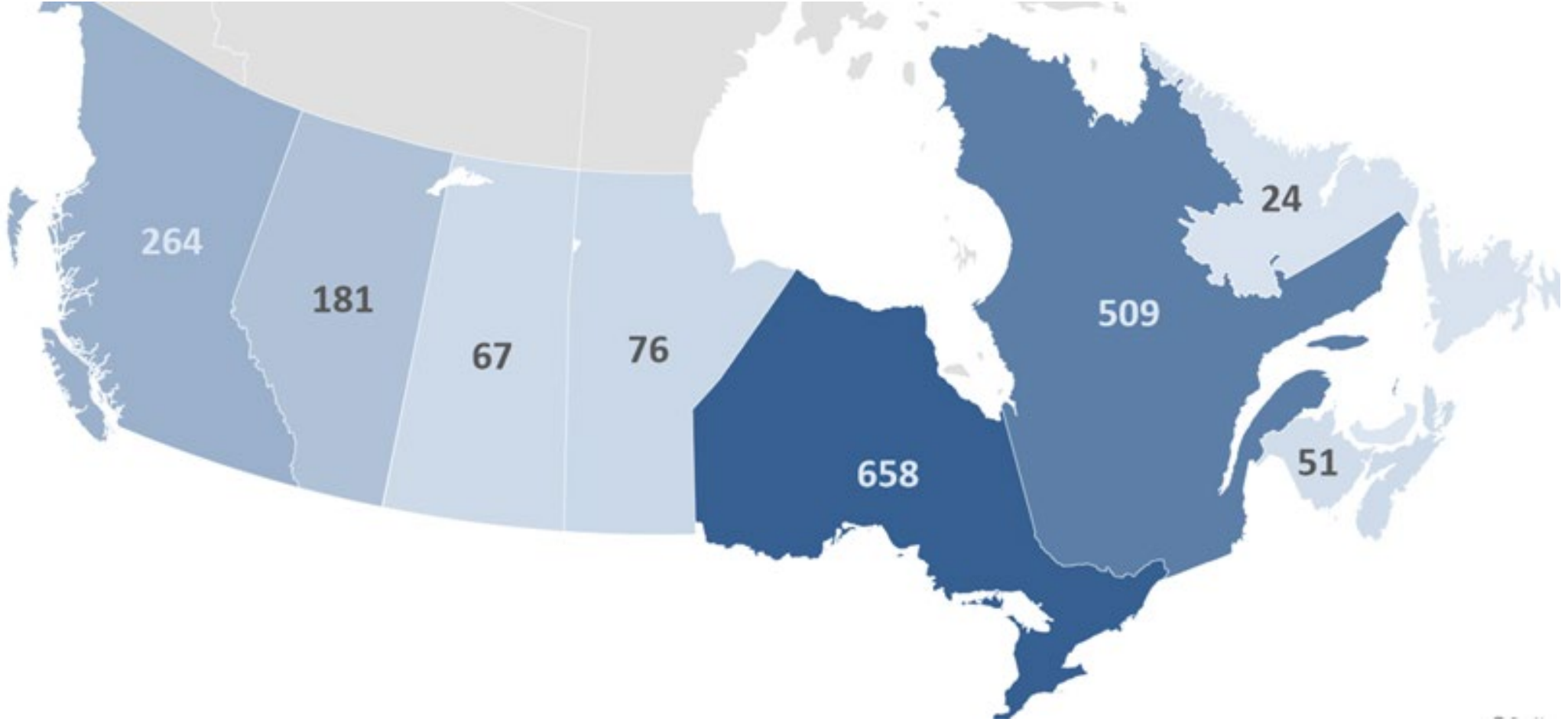
# Canadian Sows (and gilts, 6 months and over) by Province

January 1, 2024 = 1.20 million  
All inventories in 1,000 head



Source: Statistics Canada

# Chicken Production in Canada (Live Weight Mkg)





**Cargill and JBS**





- Maple Leaf
- Olymel
- HyLife
- Sunterra
- Donald's



- Sofina/Lilydale: Calgary, Wynyard, Edmonton, Abbotsford, Port Coquitlam
- Maple Leaf: Edmonton
- Sunrise: Surrey, Winnipeg, Lethbridge
- Colonial: Armstrong
- Hallmark: Vancouver
- Rosstown: Abbotsford
- Superior: Coquitlam
- Prairie Pride: Saskatoon



Meat  
Demand

GO  
VEGAN

CLIMATE  
CHANGE

CCN









BEYOND MEAT  
**BEYOND BURGER**  
PLANT-BASED PATTIES

20G OF PLANT PROTEIN PER SERVING NO SOY NO GLUTEN

COOK FOR 8 MIN.

NON GMO Project VERIFIED

BEYOND MEAT  
**BEYOND BURGER**  
PLANT-BASED PATTIES

20G OF PLANT PROTEIN PER SERVING NO SOY NO GLUTEN

COOK FOR 8 MIN.

NON GMO Project VERIFIED

BEYOND MEAT  
**BEYOND BEEF**  
PLANT-BASED GROUND  
20G OF PLANT PROTEIN PER SERVING NO SOY NO GLUTEN

BEYOND MEAT  
**BEYOND BEEF**  
PLANT-BASED GROUND  
20G OF PLANT PROTEIN PER SERVING NO SOY NO GLUTEN

BEYOND MEAT  
**BEYOND BURGER**  
PLANT-BASED PATTIES

20G OF PLANT PROTEIN PER SERVING NO SOY NO GLUTEN

COOK FOR 8 MIN.

NON GMO Project VERIFIED

BEYOND MEAT  
**BEYOND BURGER**  
PLANT-BASED PATTIES

20G OF PLANT PROTEIN PER SERVING NO SOY NO GLUTEN

COOK FOR 8 MIN.

NON GMO Project VERIFIED

BEYOND MEAT  
**BEYOND BEEF**  
PLANT-BASED GROUND  
20G OF PLANT PROTEIN PER SERVING NO SOY NO GLUTEN

BEYOND MEAT  
**BEYOND BEEF**  
PLANT-BASED GROUND  
20G OF PLANT PROTEIN PER SERVING NO SOY NO GLUTEN

BEYOND MEAT  
**BEYOND BEEF**  
PLANT-BASED GROUND  
20G OF PLANT PROTEIN PER SERVING NO SOY NO GLUTEN

BEYOND MEAT  
**BEYOND BEEF**  
PLANT-BASED GROUND  
20G OF PLANT PROTEIN PER SERVING NO SOY NO GLUTEN

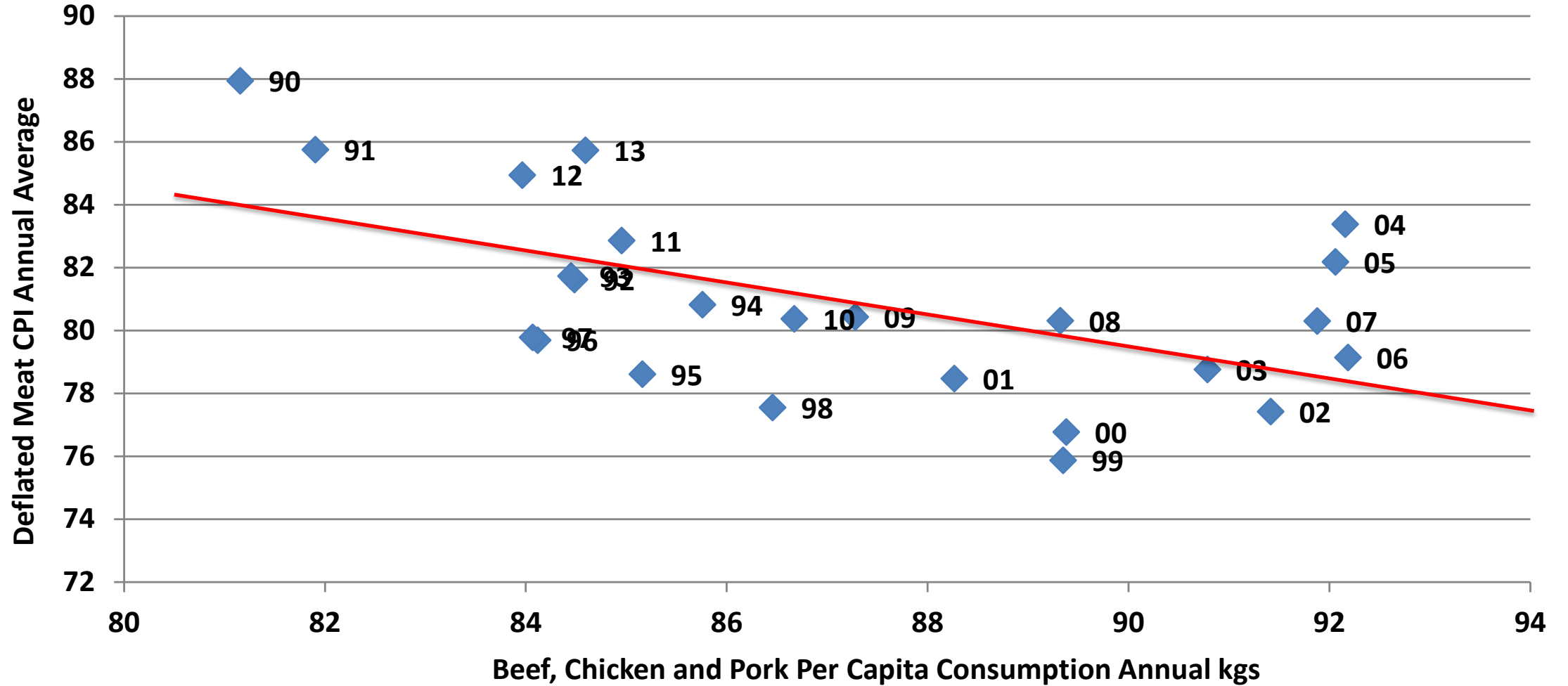
BEYOND MEAT  
**BEYOND BURGER**

NOW EVEN MEATIER  
MARBLED JUICINESS  
COMPLETE PROTEIN

BEYOND MEAT  
**BEYOND BURGER**

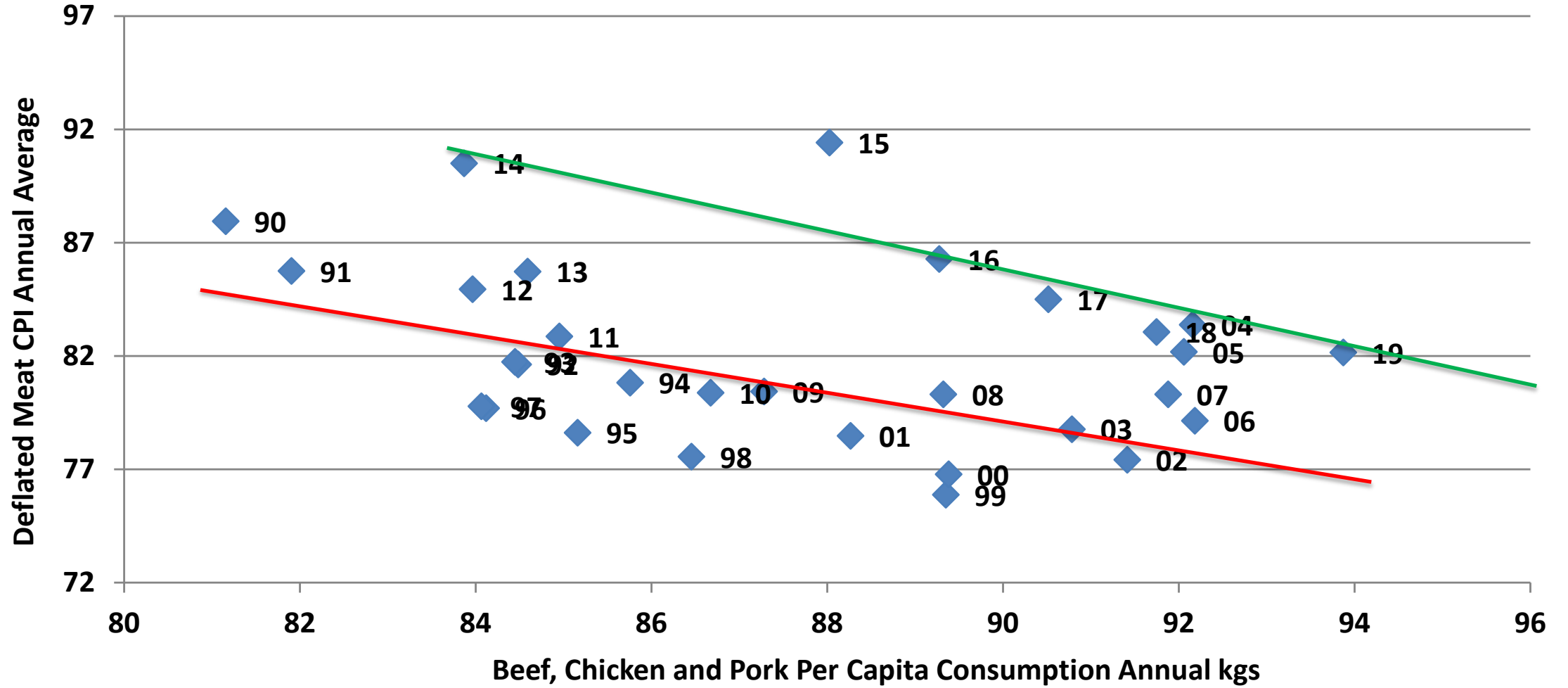
NOW EVEN MEATIER  
MARBLED JUICINESS  
COMPLETE PROTEIN

# U.S. Beef, Chicken, and Pork Combined Demand 1990-2013

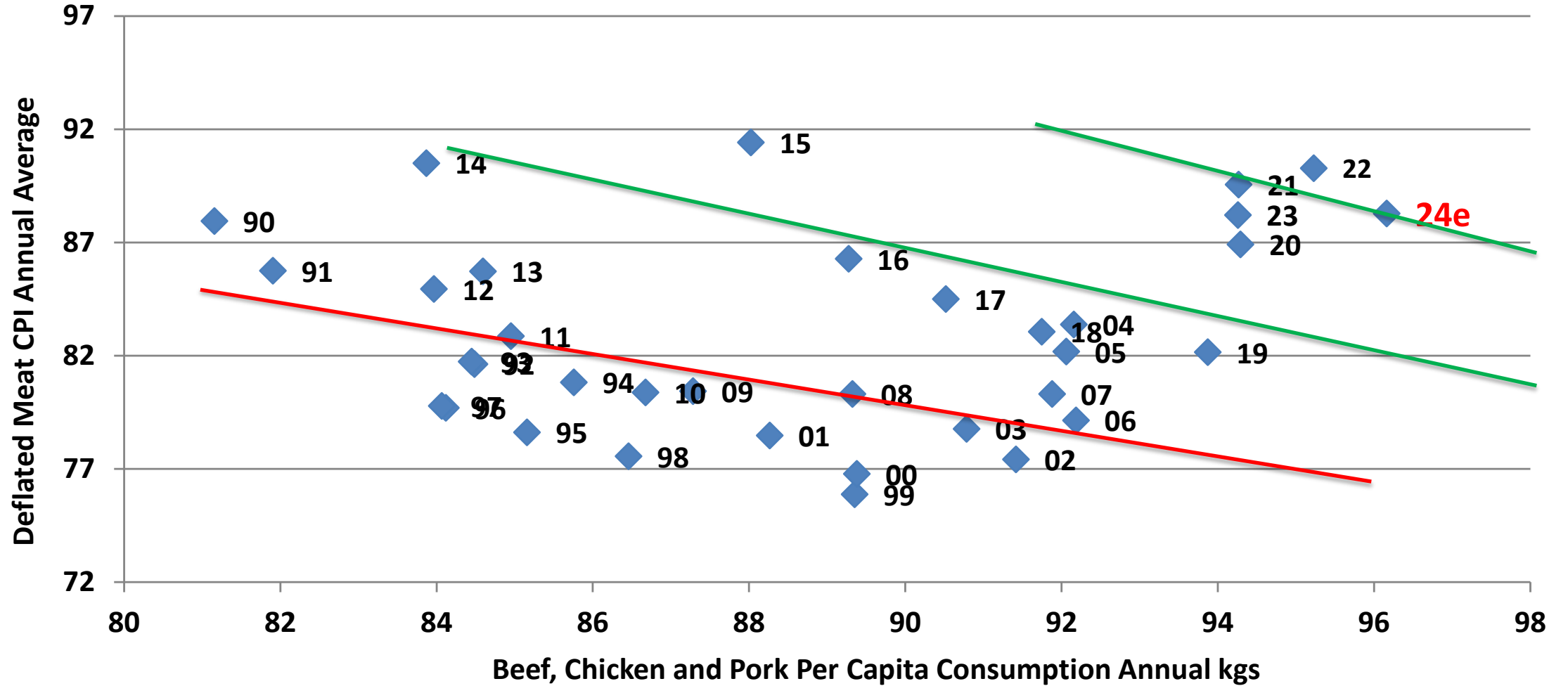




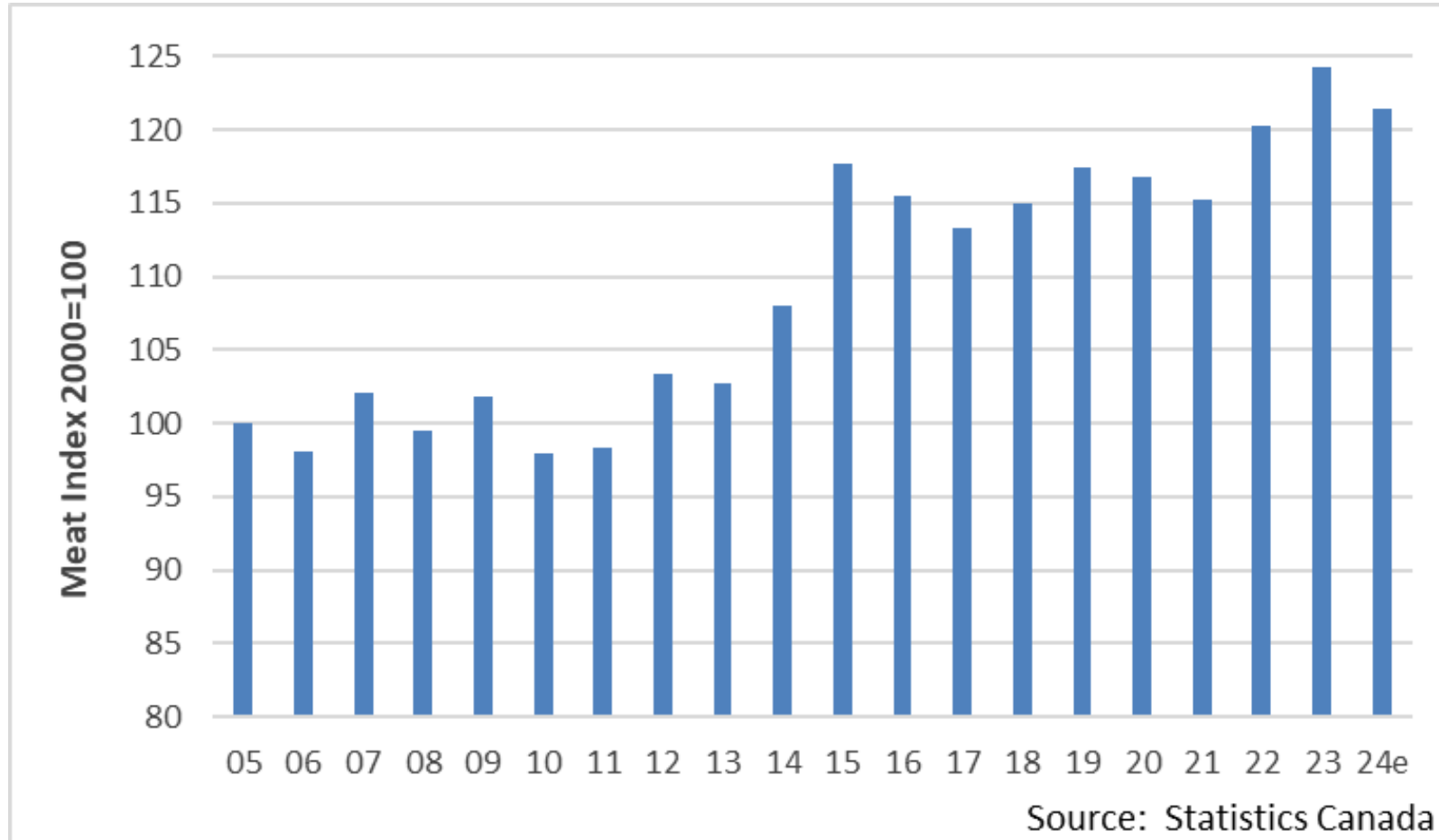
# U.S. Beef, Chicken, and Pork Combined Demand 1990-2019



# U.S. Beef, Chicken, and Pork Combined Demand 1990-2024



# Canadian Meat Demand Index 2005-2024e





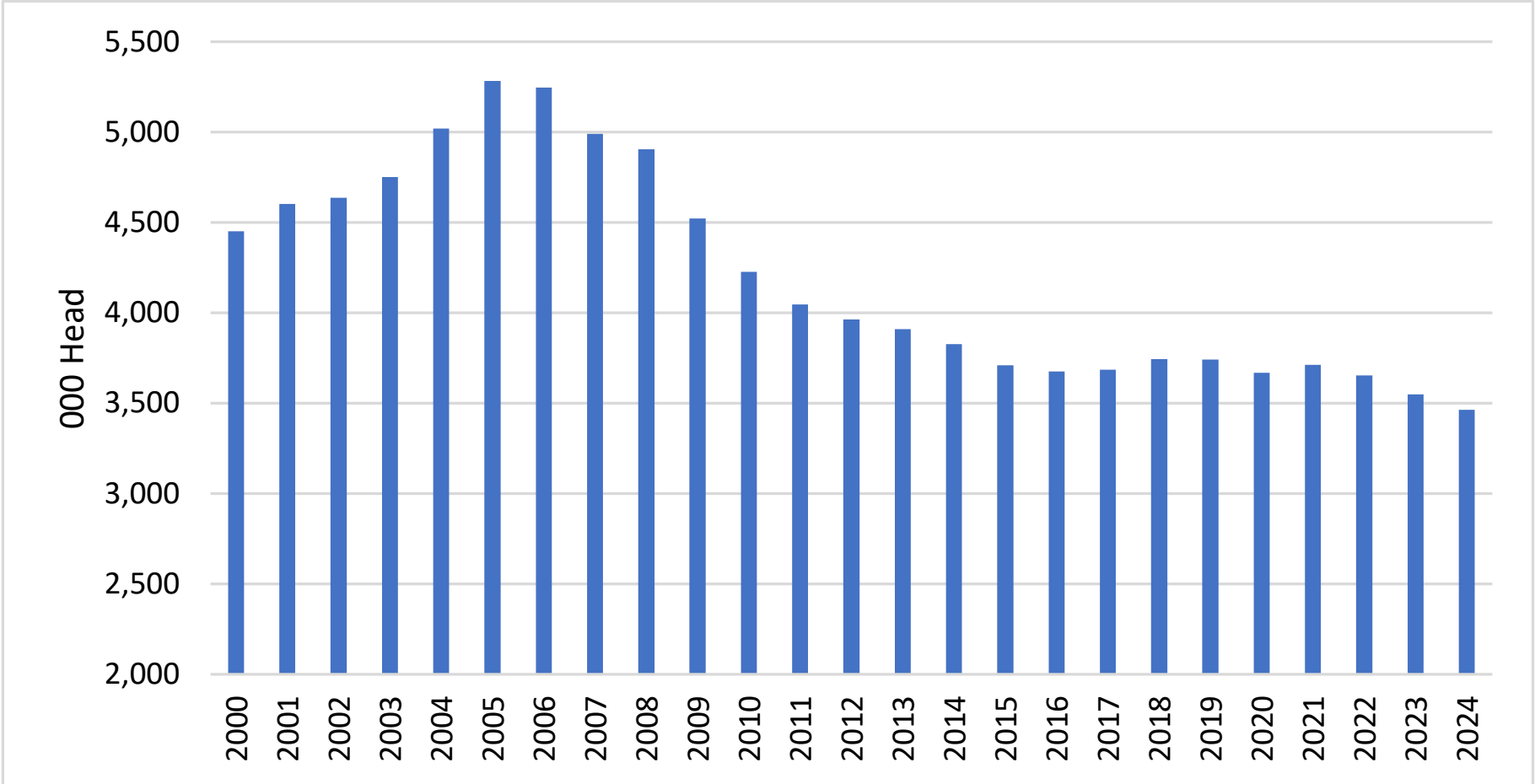






Supply

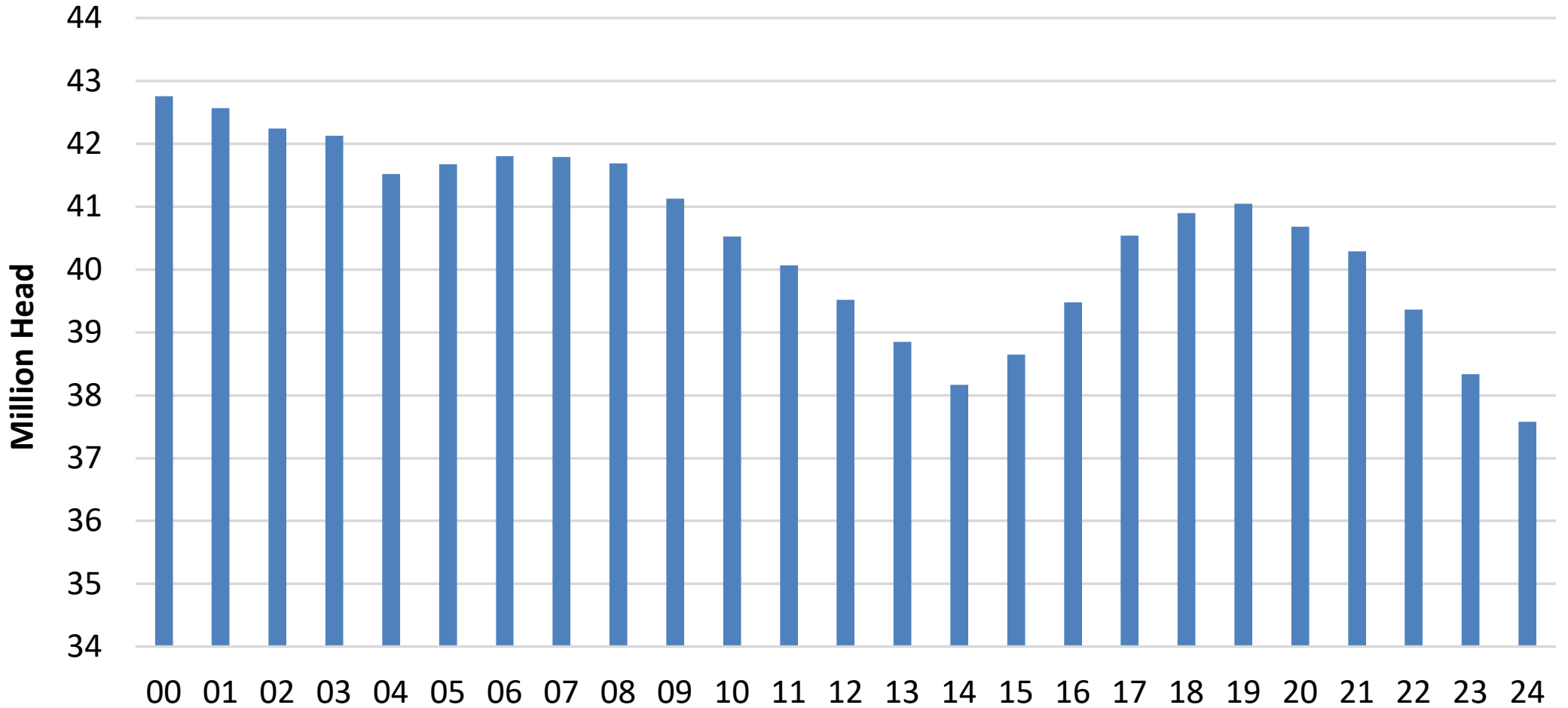
# Canadian Beef Cow Inventory 2000-2024



Source: Statistics Canada

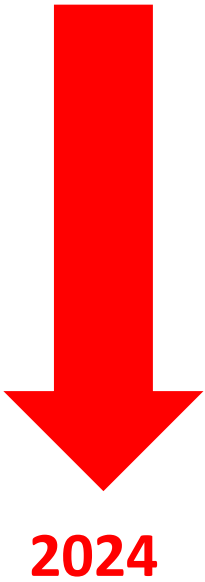
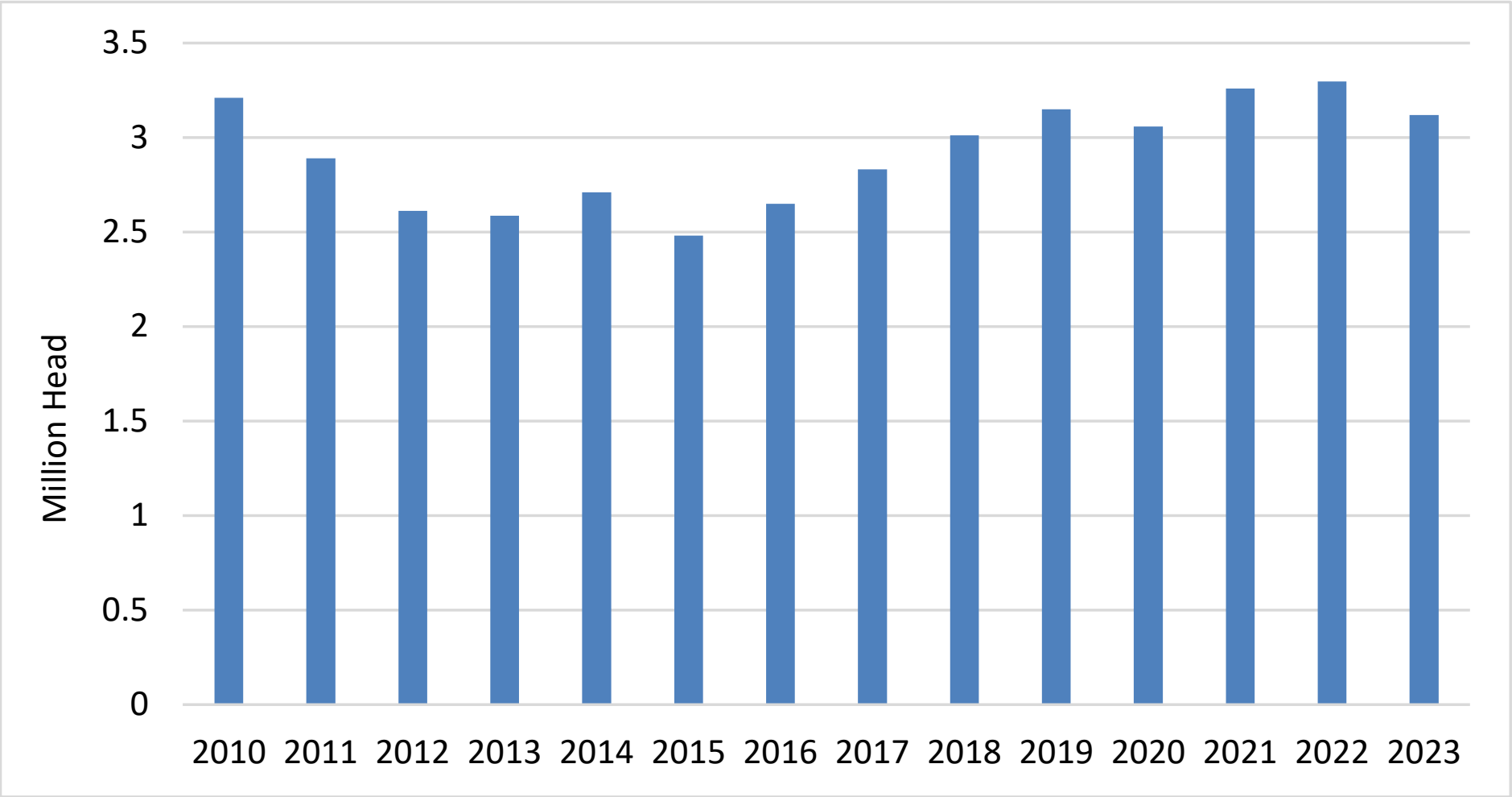


# U.S. Cow Herd 2000-2024

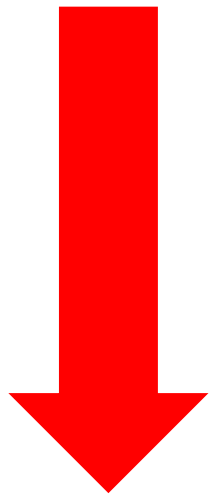
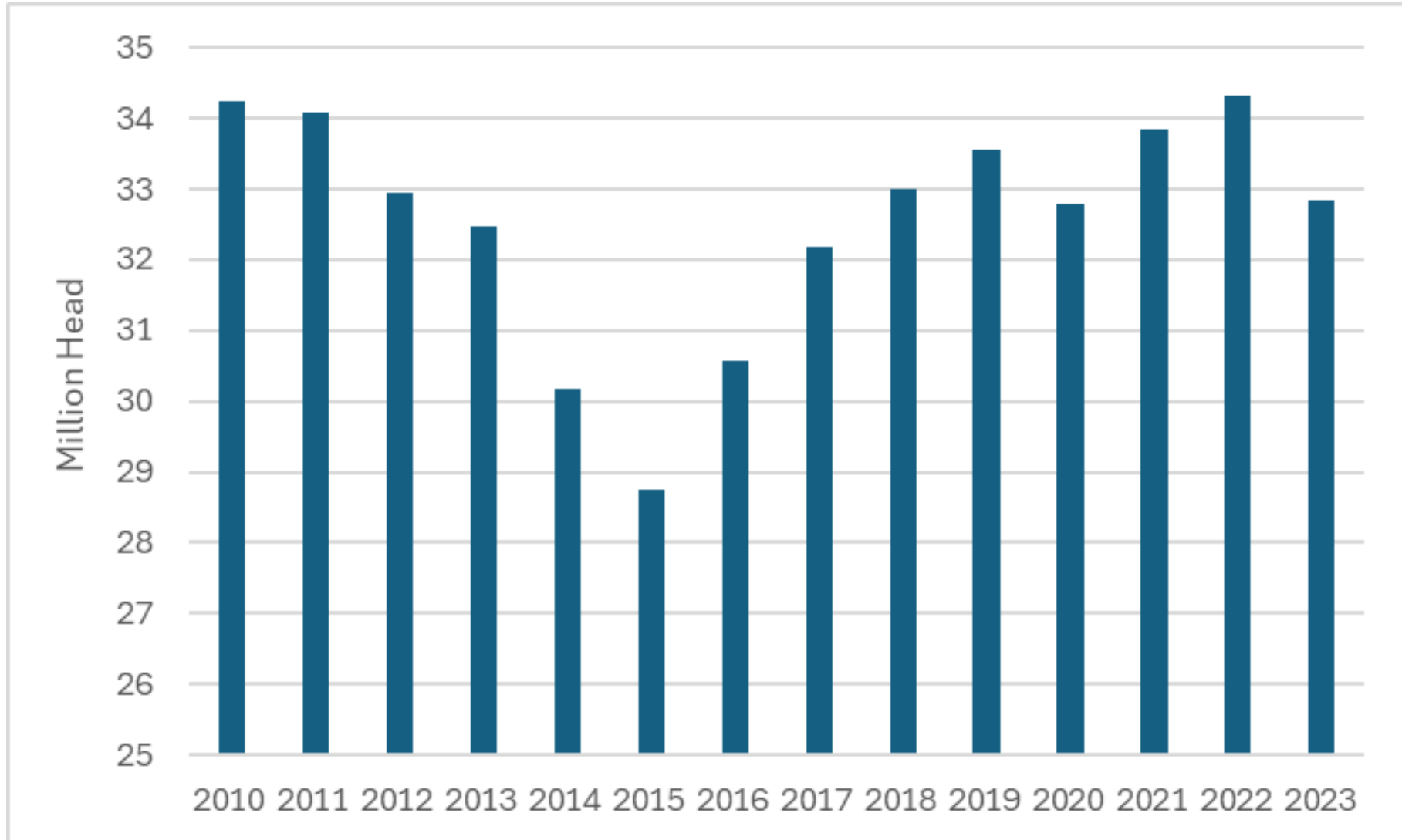


Source: USDA

# Canadian Cattle Slaughter Annual 2010-2024

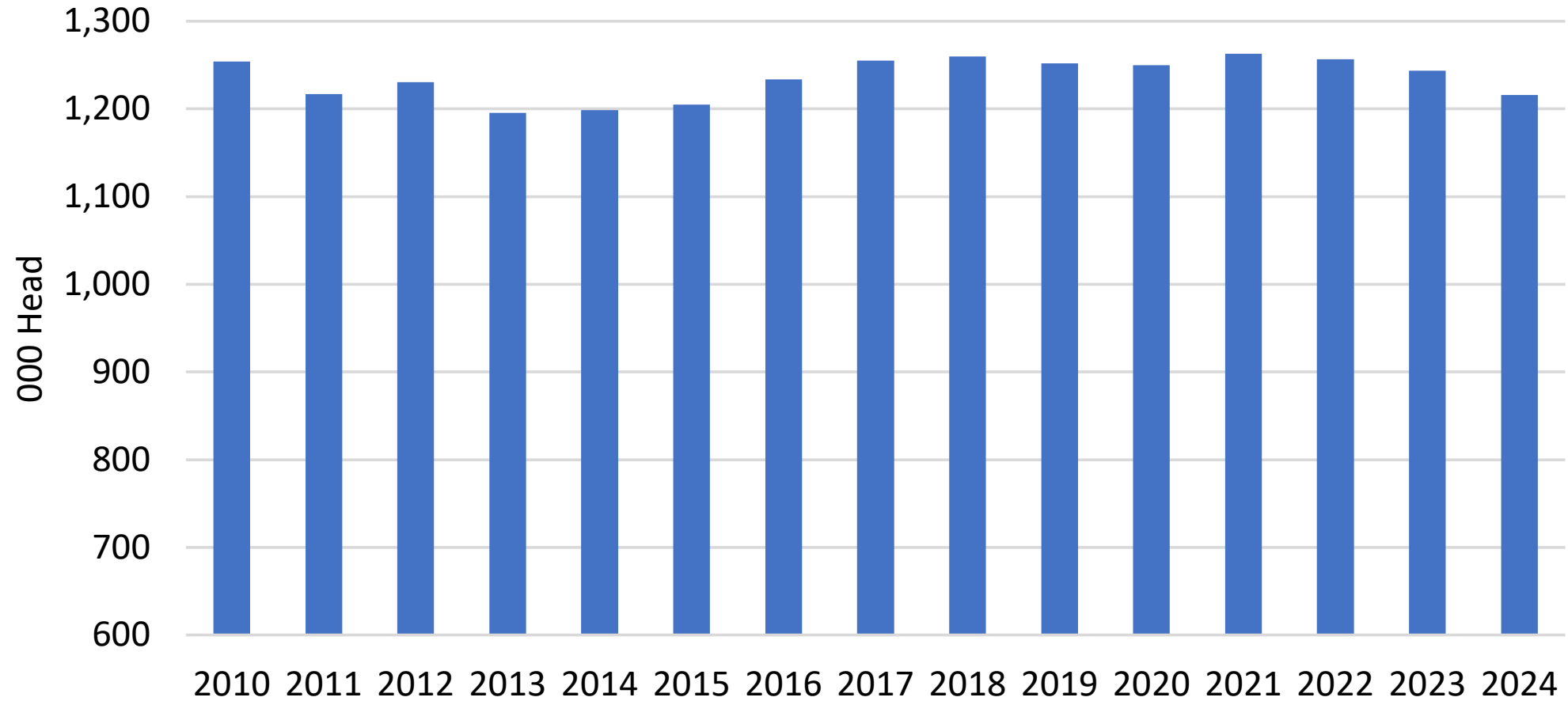


# U.S. Cattle Slaughter 2010-2024



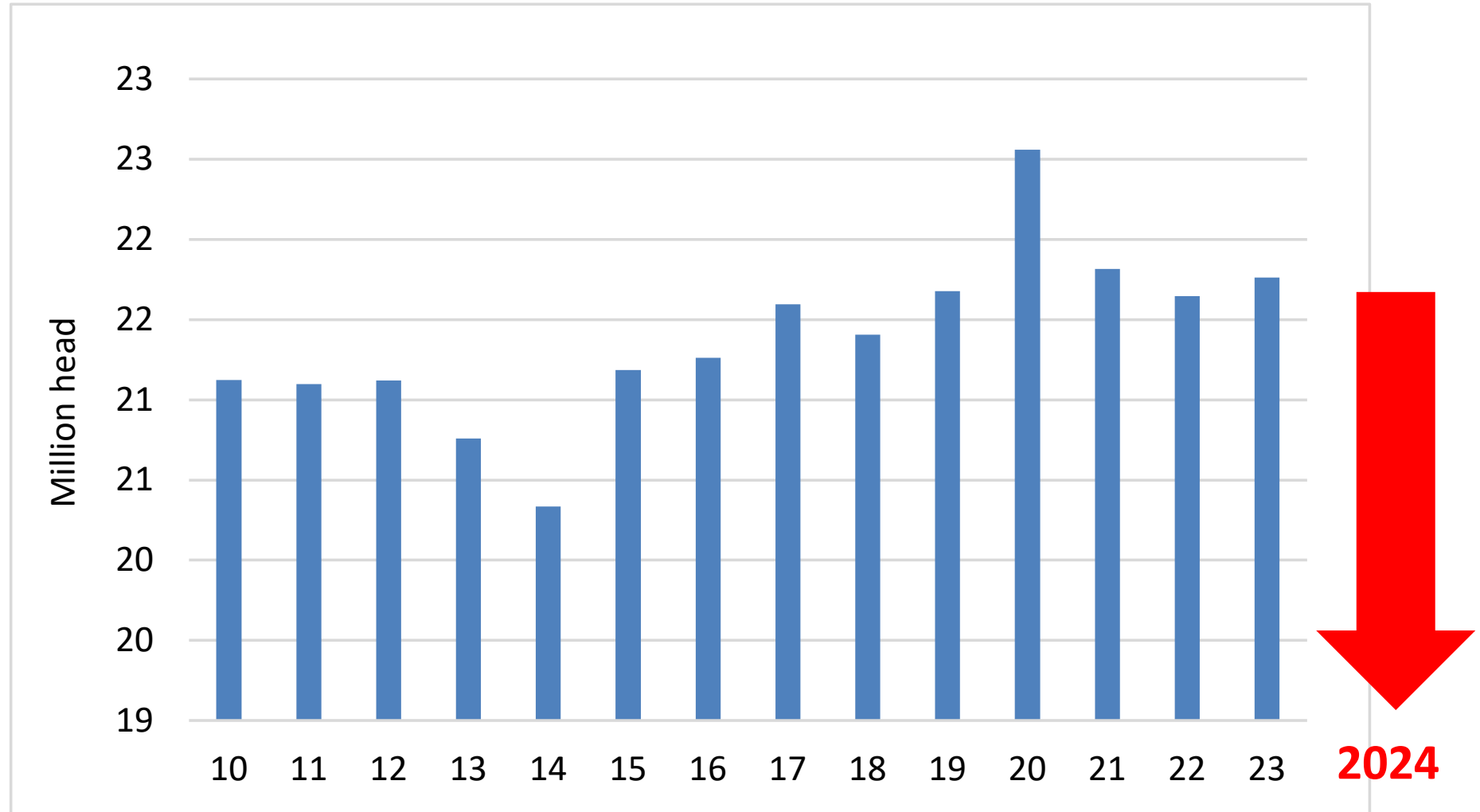
**2024**

# Canadian Hog Breeding Herd Inventory January 2010-2024



Source: Statistics Canada

# Canadian Annual Hog Slaughter 2010-2024



# Rationalization 2021-2023



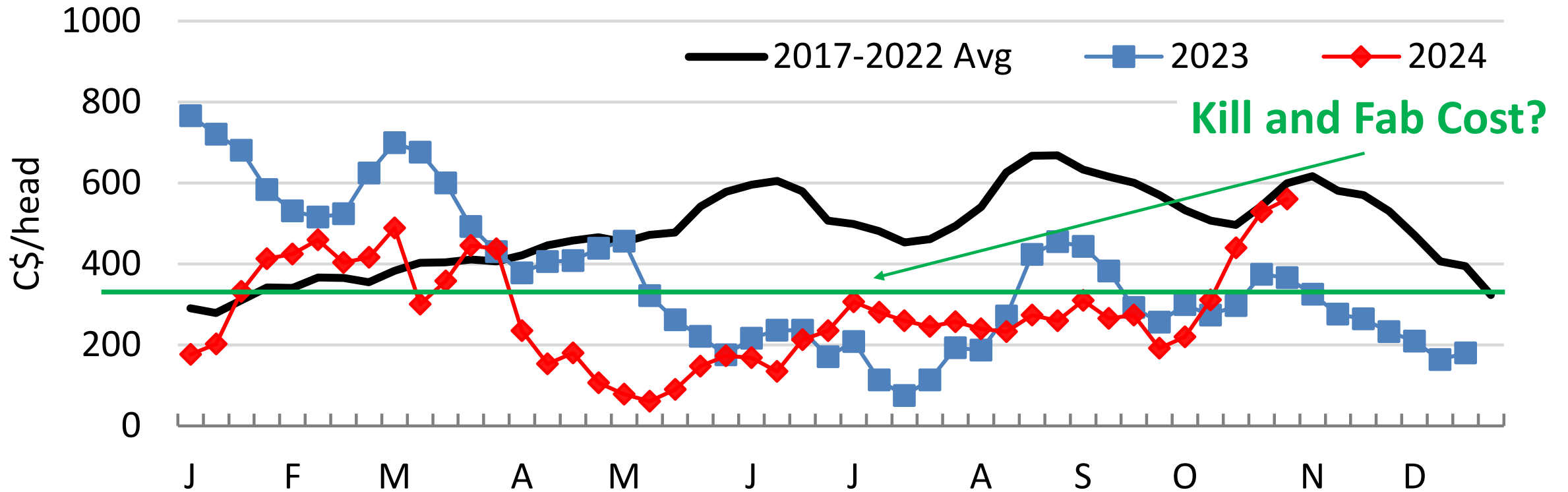




Profitability



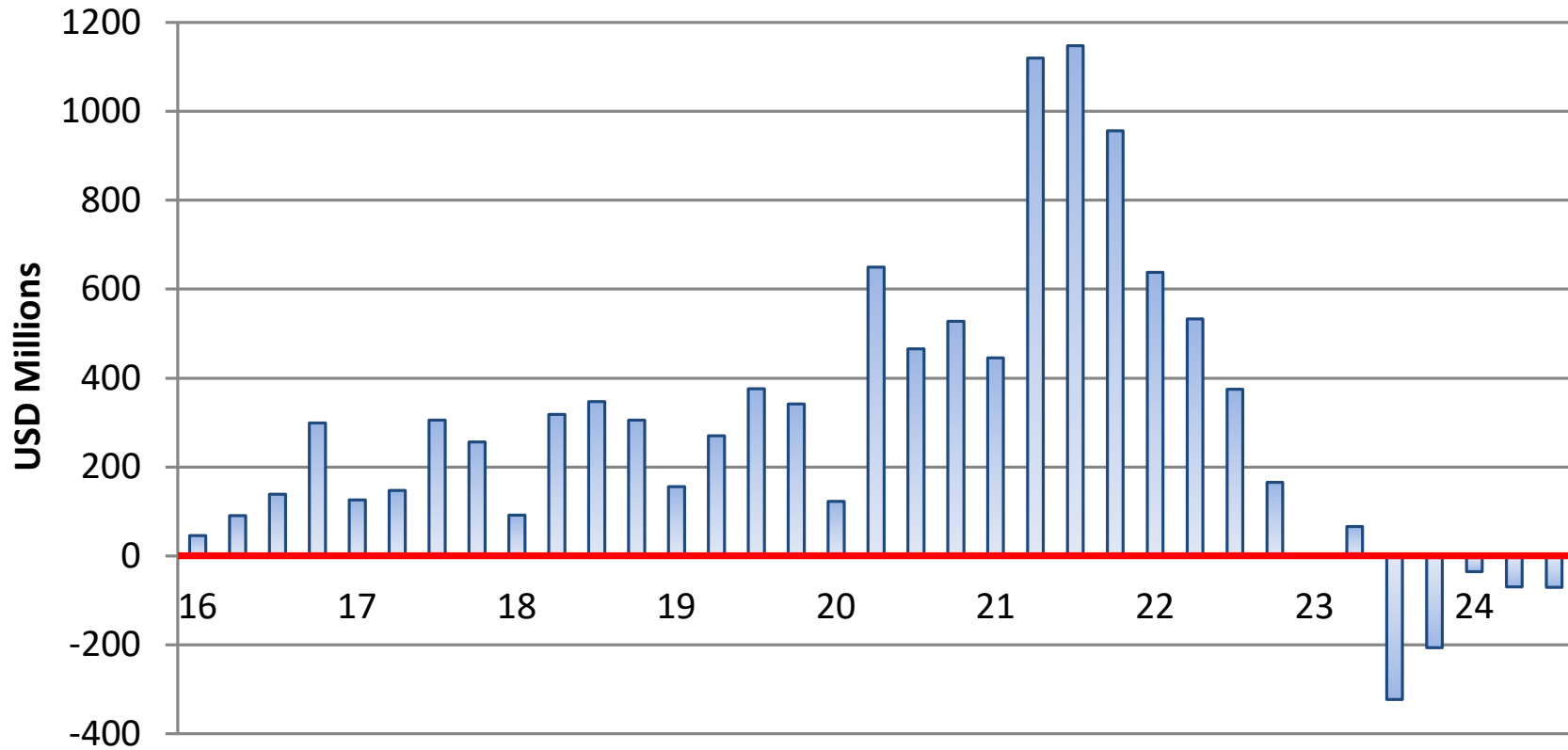
# Model Alberta Packer Fed Cattle Gross Margins, Weekly 2024, 2023, 2017-2022 Average



2020 not be included in the average due to COVID disruptions.

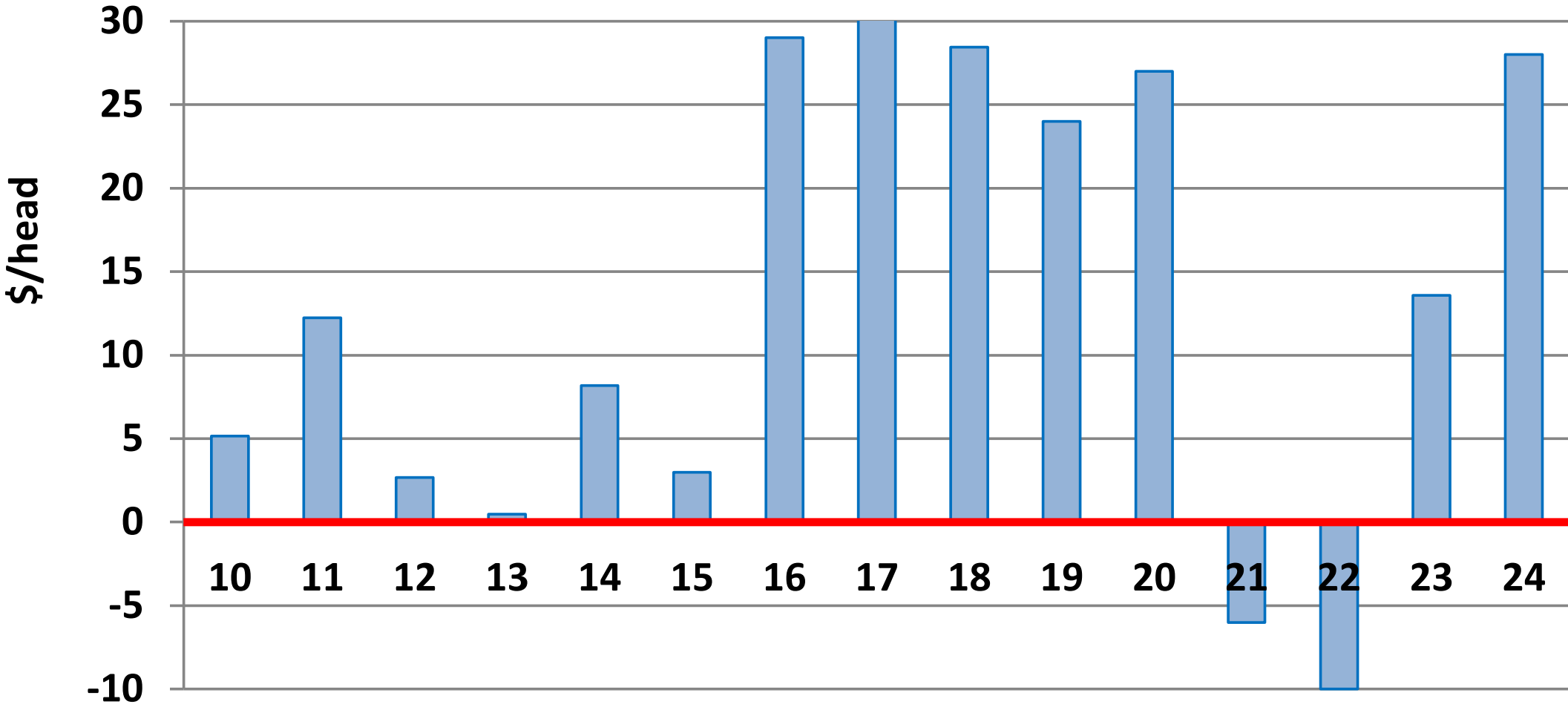
Source: Canfax, USDA and Grier Calculations

# Tyson Foods Beef Operating Income Quarterly 2016-2024



Source: Tyson releases

# Canadian Pork Packer Margins Annual 2010-2024





- State of the Industry
- **Prospects**

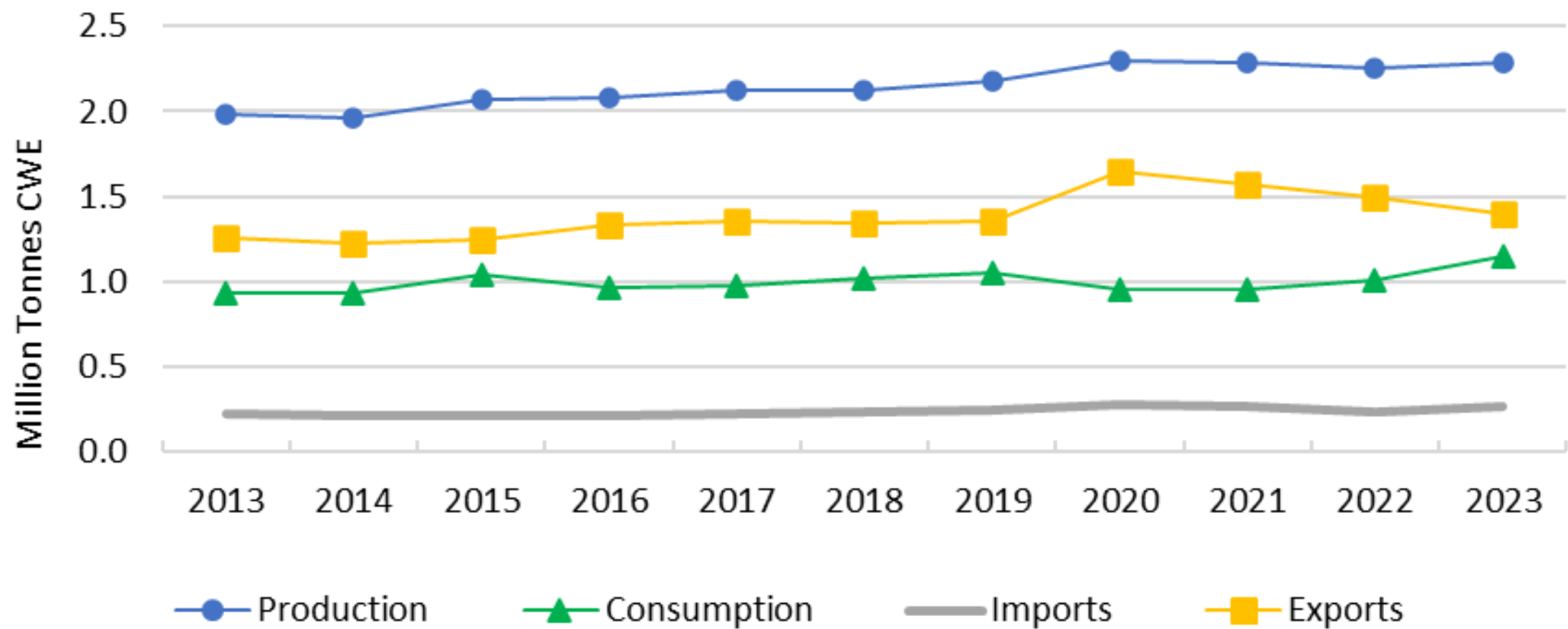


**HELP**

**WANTED**



### Canada Pork Supply and Demand Annual 2013-2023



Source: Statistics Canada Supply and Disposition of Food



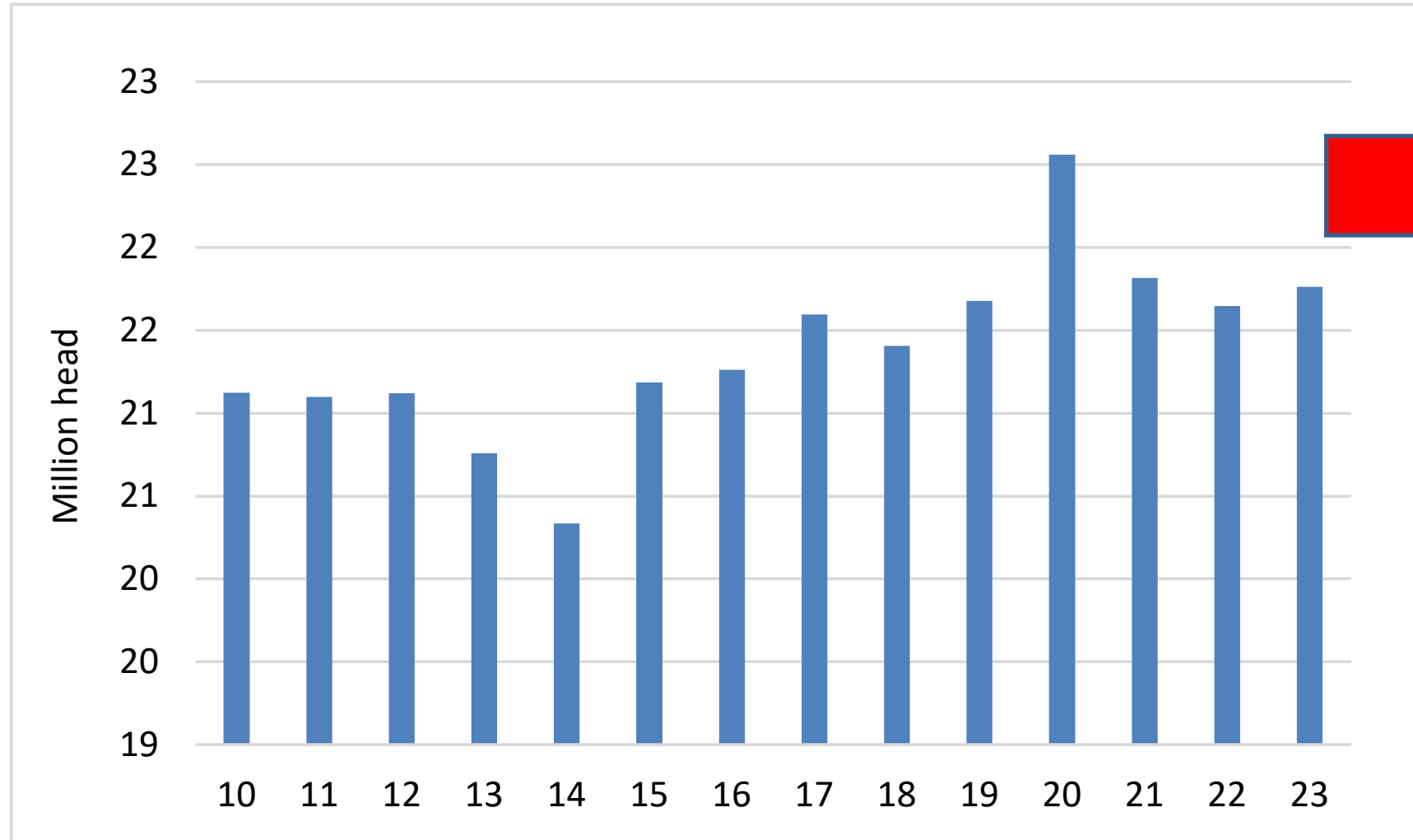




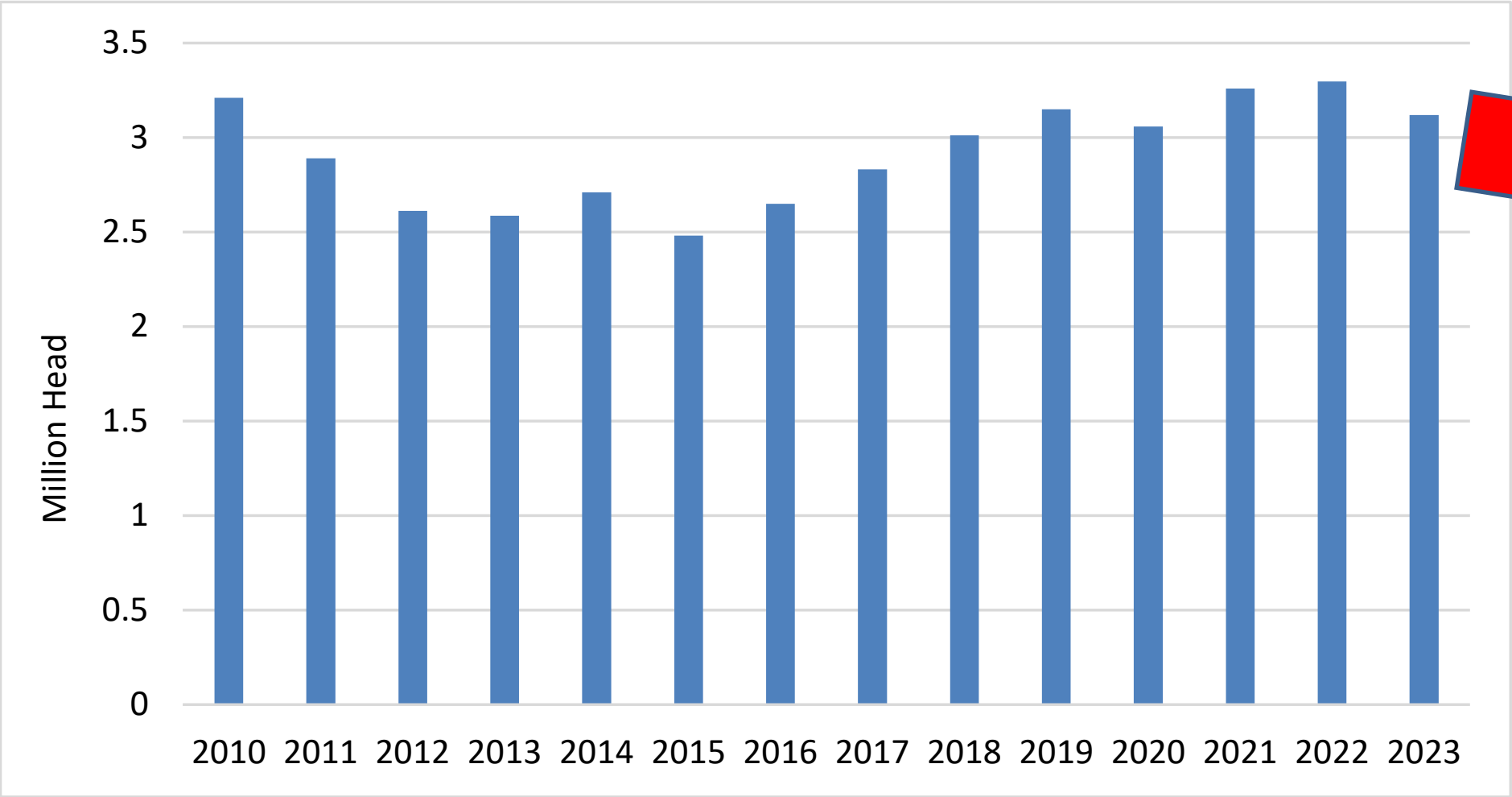
# Stability



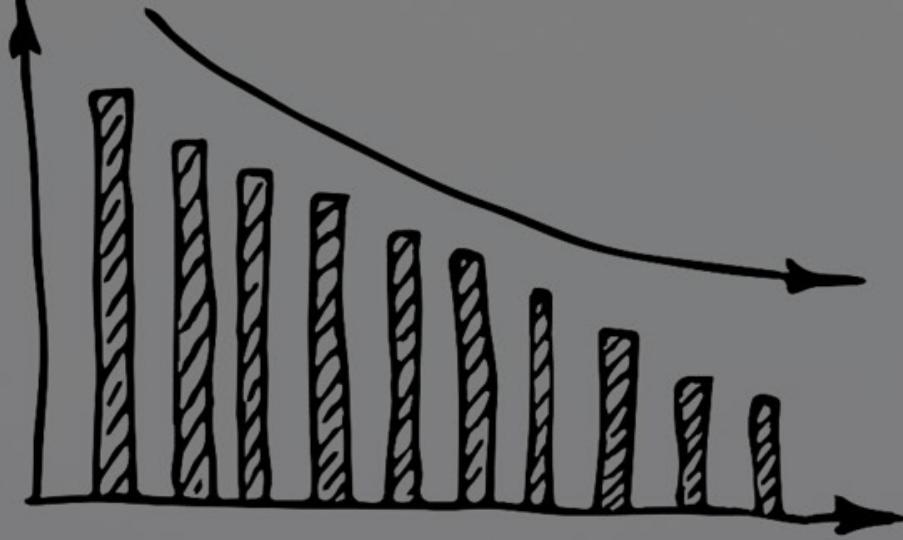
# Canadian Annual Hog Slaughter 2010-2026



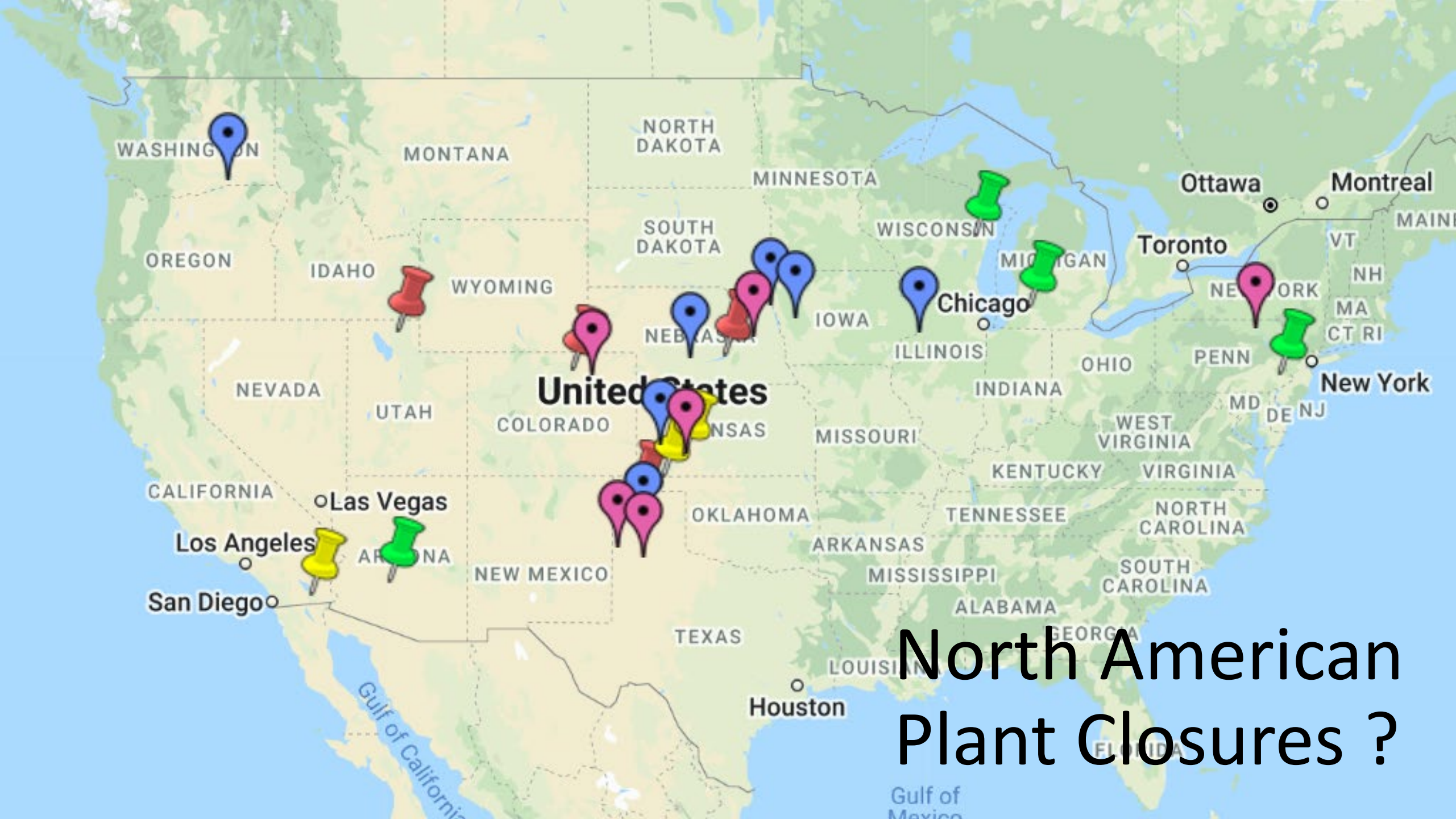
# Canadian Cattle Slaughter Annual 2010-2026



Source: AAFC



Beef Packer Margin  
Prospects are Poor 2025-  
2026



United States

North American  
Plant Closures ?



**Canada is one small part of  
Cargill and JBS global  
operations**



# Three Pillars of Supply Management

- Import Controls
- Production Control
- Cost of Production Pricing

relations  
point of view.

**Tariff** [ 'tærɪf ] a  
tax that a gove  
on goods comi  
into a country





No material trade threats, yet



Further Processor Stress



# Turkey Demand Stagnation



# Plant Consolidation

- **Demand: Good**
- **Supplies: Declining for beef, steady to higher for pork and up for chicken.**
- **Profitability: Beef bad; pork and chicken no issues; turkey?**
- **Further poultry processors vulnerable**
- **Plant closures: beef yes, others...?**



**RECAP**

# Beef, Chicken and Pork

Kevin Grier, November 2024

**UFCAW**  
**local 401**

